

# HOW TO INSTALL FOREXSEVEN

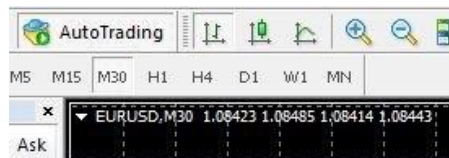
**STEP 1:** Unpack ForexSeven archive in to any folder

**STEP 2:** Run your MT4 terminal and go to menu File -> Open Data Folder.

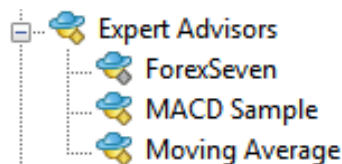
**STEP 3:** Find MQL4 folder in opened MT4 terminal directory and copy the Expert and Libraries folder from your unpacked directory into MQL4 folder. Confirm the merging twice.

**STEP 4:** Restart your MT4 terminal. Login in to your trading account.

Once Meta Trader 4 opens, look on the left for Market Watch. It will show a listing of Pairs. Locate **EURUSD** only, and right click it, then click Chart Window. You should then see a chart on your screen that looks like this.

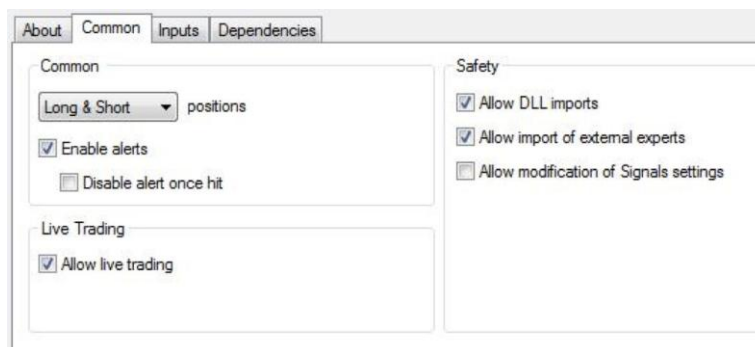


On the left screen you will see the following under the Navigator Box. Click the [+] next to Expert Advisors. Look for Forex Seven in the list. Click ForexSeven and drag it to the chart on the right that you opened.



**! DO NOT PUT IT ON ANY OTHER PAIRS. IF YOU DO SO, YOU WILL GET DUPLICATE TRADES !**

Make sure the check marks match the image below for the window (Common tab):



---

# SETTINGS

---

We do not recommend changing any settings other than the Risk and Hedge settings unless you have trading experience.

**CloseAllOrders = FALSE** this parameter you should use for properly shutdown the system. You can not do that manually, because the system will open additional orders.

**StartNewTrade = TRUE** if you want shutdown the EA, but don't want to close the current order with minus and wait until it'll be closed with Take Profit and then a new concatenation won't start.

**Lot** – The lot size for the first order.

**AutoLots** – When set to **TRUE** the robot will auto calculate lot size based on the percent risk you choose in the setting below this one. If **FALSE**, then you can use a set lot size using the Lot setting above this.

**Risk** – The percentage of the deposit which you are ready to take risks. In the worst circumstances, you will not lose more than the value which you set.

**Slippage** – You can leave this as default this is a unique number that allows the robot to track its trades.

**NFA** – if “true”, the EA will disable opening possible opposite trades (no hedge) and apply FIFO rule. If “false”, the EA will trade without NFA limitations. Please notice, despite the fact of enabling this option, some brokers may show a FIFO error from time to time, but it is not dangerous for the logic of the EA.

---

# RECOMMENDATIONS

---

We recommend you use the auto calculation of the lot (**AutoLots=true**) and set parameter Risk not more than **35%**. The default settings are recommended as well. You need to have about **\$3400** on your deposit.

If you want trading with fix lot set parameter **Lot =0,01** for deposit **\$1200 (it's for 100% risk)**. You can calculate Lot size for your deposit following this proportion.