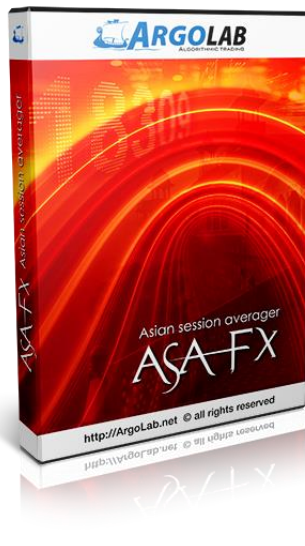




Expert Advisor AsA Fx manual



General information

AsA Fx is a fully automatic Expert Advisor (EA) for MetaTrader 4 terminal. This EA is capable of trading all currency pairs, metals and indexes. The trading strategy of AsA Fx is based on the Support-Resistance levels (SRLs). AsA places buy limit/sell limit orders on the nearest SRLs outside of the trading channel. In most cases, after triggering the limit order, price retraces, bringing us a quick take-profit. If not, EA places the next order on the next SRL, with a larger lot size, aiming for the price retracement. If the price continues its movement against the position, AsA opens a grid of orders on the consecutive SR levels, with the maximal number of grid layers specified in the settings.

The AsA strategy is the most successful traded during the Asian trading hours. An essential part of the EA is a news filter based on the FFCAL news indicator. It is not recommended to trade some time before and some time after the news on the traded currencies. In the case of really important news, it is recommended to switch off EA for the whole night.

Official web-site: <http://asa.argolab.net/>

Support and discussion: <http://forumargolab.net/threads/asa-fx-eng.527/>

Recommended brokers:

[RoboForex](#) , [Forex4you](#) , [Alpari](#) , [FxOpen](#) , [InstaForex](#)

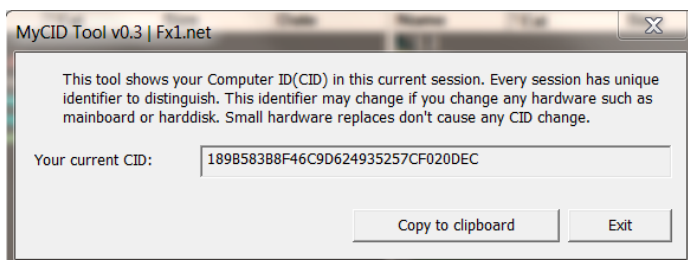
[ICMarkets](#) , [Pepperstone](#)

Recommended VPS:

[myForexVPS](#) , [myFXvps](#)

Authorization

For trading with EA, you need to authorize your computer. One license is valid for one computer/VPS. The number of MT4 terminals on this computer and the number of trading accounts are not restricted. The computer/VPS is authorized by its unique code CID (Computer Identification Number). In order to determine the CID code of your computer/VPS, run the supplied utility showmyid.exe:



Copy the CID code and send it to the support e-mail, together with confirmation of payment. You will receive a confirmation that your computer is authorized for trading with AsA Fx. After that you can start your trading.

You can change the authorized computer any time. Just send the new CID to the support e-mail.

Note that the requests for CID change should not be too frequent. In case of misuse, we may freeze the CID of the license for some time.

Installation

Copy the files of the EA and the indicator into the data folder of your MT4 terminal. In MT4 terminal, open menu Files -> Open Data Folder -> MQL4. Copy EA AsAXXX.ex4 into Experts folder, the library AsAXXX.dll into Libraries folder, the indicator FFCAL.mq4 into Indicators folder.

First start

1. Make sure that trading with EAs and dll calls are allowed in the settings of the terminal ([How to enable trading with EA and dll calls in MT4 terminal?](#))
2. Attach EA to the M15 chart of the chosen currency pair.
3. Load the provided preset file, the same for all pairs ([How to load preset settings into EA?](#)).
4. Set the AutoMMEquity parameter (see Money Management).
5. Set GMT offset of your broker time ([How to determine the GMT Offset of your broker?](#)).
6. Set the currency switches for the news filter (ReportAllForUSD... ReportAllForCNY). Important: the NZD pairs correlate strongly with AUD pairs, so we recommend to enable both ReportAllForNZD and ReportAllForAUD for all NZD and AUD pairs.

Money management

Recommended currency pairs and deposit requirements for starting lot 0.01 (assuming 1 lot = 100,000), in units of the currency of the deposit (USD, USD cents, etc.):

AUDCHF - 6 000	AUDUSD - 8 000	CADCHF - 4 000	EURAUD - 8 000
EURCAD - 4 000	EURCHF - 8 000	EURGBP - 4 000	GBPCAD - 4 000
GBPCHF - 4 000	GBPUSD - 5 000	NZDCAD - 5 000	NZDCHF - 5 000
NZDUSD - 8 000	USDCAD - 6 000	USDCHF - 5 000	

For trading with all recommended pairs, the minimal deposit is 8 000\$ for USD accounts and 80\$ for USD cent accounts. In settings, select AutoMM = TRUE, LotSize = 0.01, AutoMMEquity = the value specified above for each currency pair.

For trading other pairs, use deposit 10 000\$ for USD accounts and 100\$ for USD cent accounts (AutoMMEquity = 10000).

For aggressive trading one may use a deposit of \$ 3 000 for all pairs (AutoMMEquity = 3000).

AsA Settings

Money management:

LotSize – starting lot size (for AutoMM = FALSE).

AutoMM (TRUE/FALSE) – Enable/disable automatic money management. When AutoMM = FALSE, the starting lot of the basket is LotSize. When AutoMM = TRUE, the starting lot of the basket = LotSize * (Account balance)/ AutoMMEquity.

AutoMMEquity – parameter of AutoMM.

Logic:

TPPips – take profit level of the basket.

IndentPips – shift of trading orders with respect to the support-resistance levels.

LevelBE – if the number of orders in the basket reaches this value, the basket will be closed in breakeven + BEpips pt. If 0, switched off.

BEpips – parameter of LevelBE.

Levels:

Parameters for the determination of support-resistance levels.

MMPeriod – period.

TF – working time frame (any standard timeframe, in minutes).

TF_Trend – working time frame in the trend mode (in minutes).

NLevel_Trend – number of orders in the basket for declaring the trend mode.

Channel:

Parameters of the price channel.

PeriodMA – period of MA.

PriceMA – price for calculation of MA.

MethodMA – method of calculation of MA.

ATRPeriod – period of ATR.

ChWidth – width of the channel.

Multicurrency:

UseMultiCurrency (TRUE/FALSE) - switches on/off the Multicurrency feature. The Multicurrency feature checks the number of trading pairs (pairs, for which there are open orders) and the total open drawdown on the trading account. If the number of pairs or the drawdown reaches the prescribed value, opening a new basket will be blocked. Information box of EA shows the label "Flag_Stop_Global is set" in this case.

MaxInstrument - the maximal number of currency pairs that can be traded simultaneously.

MaxDD_Stop - Maximal open drawdown (in % of the balance) for which a new basket can be started.

MaxDD_Release: If opening of a new basket was blocked, trading will be resumed when the open drawdown reaches this value.

For example, MaxDD_Stop = 10, MaxDD_Release = 5. When drawdown reaches 10%, opening of a new basket is blocked. Drawdown needs to recede to 5% for the normal trading to be resumed.

OneMagicOnly - if TRUE, the MultiCurrency feature will include only order with the current magic number.

Trade Session:

Settings of the trading session for the first order of the basket.

GMTOffset – GMT shift of the broker.

AutoDST – auto DST on/off.

TimeStartGMT – begin of the trading session.

TimeNoPendingGMT – end of the trading session.

Misc:

Magic – magic number of trading orders.

Comments – comment of the trading orders.

comment_color – font color.

box_color – background color.

Debug – detailed output in logs on/off.

FFCAL filter:

Settings of the news filter FFCAL.

UseNewsFilter – use news filter.

ImpactFilter – minimal importance level of the news for blocking trading.

MinsBeforeNews – begin of blocking, minutes before the news.

MinsAfterNews – end of blocking, minutes after the news.

OffsetHours – additional time shift of the indicator.

ReportAllForUSD – use news on USD.

ReportAllForEUR – use news on EUR.

ReportAllForGBP – use news on GBP.

ReportAllForNZD – use news on NZD.

ReportAllForJPY – use news on JPY.

ReportAllForAUD – use news on AUD.

ReportAllForCHF – use news on CHF.

ReportAllForCAD – use news on CAD.

ReportAllForCNY – use news on CNY.

<http://ARGOLab.net/>

<http://ForumARGOLab.net/>