

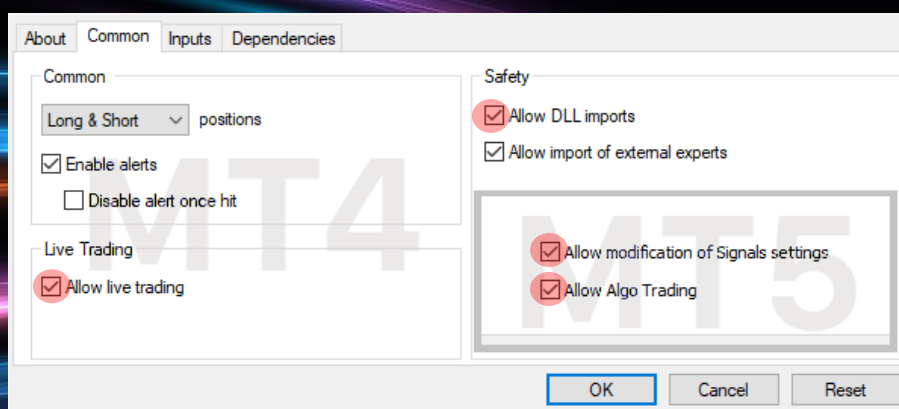
USER MANUAL

HOW TO INSTALL THE EA:



Open your MT4/MT5 terminal. Go to File → Open Data Folder → MQL4/MQL5 → Experts. Copy here FX FastBot.ex4 file (if you use MT4), or FX FastBot.ex5 file (if you use MT5) from the zipped folder you received. Then go to File → Open Data Folder → MQL4/MQL5 → Libraries. Copy here ForexStore_1.4.dll file (if you use MT4), or ForexStore_MT5_1.4.dll file (if you use MT5) from the zipped folder. Reboot your MT4/MT5 terminal. Open an AUDCAD chart with ANY timeframe, drag and drop FX FastBot from the Navigator tab to the open chart.

Choose Common tab and check the boxes “Allow live trading” with “Allow DLL imports” (if you use MT4). In case of using MT5 you need to check the boxes “Allow Algo Trading” in the Common tab, and “Allow DLL imports” in the Dependencies tab.



Choose Inputs tab, select your desired trading profile and specify the preferred risk, if needed (more information about all the parameters you can find below), or keep the default recommended settings. We recommend to set the risk up to 35% (RiskLimit=35) trading with the following profiles: Conservative profile, Moderate profile (V1), Moderate profile (V2), and up to 30% risk (RiskLimit=30) trading with Elevated profile. Here are the minimum and recommended deposits for each trading profile:

Conservative

Safe: Minimum - \$600 (0.01 lot), Recommended - \$1715 for each start lot of 0.01

Normal: Minimum - \$200 (0.01 lot), Recommended - \$575 for each start lot of 0.01

Aggressive: Minimum - \$100 (0.01 lot), Recommended - \$290 for each start lot of 0.01

Moderate V1

Safe: Minimum - \$1500 (0.01 lot), Recommended - \$4290 for each start lot of 0.01

Normal: Minimum - \$700 (0.01 lot), Recommended - \$2000 for each start lot of 0.01

Aggressive: Minimum - \$350 (0.01 lot), Recommended - \$1000 for each start lot of 0.01

Moderate V2

Safe: Minimum - \$1300 (0.01 lot), Recommended - \$3715 for each start lot of 0.01

Normal: Minimum - \$500 (0.01 lot), Recommended - \$1430 for each start lot of 0.01

Aggressive: Minimum - \$300 (0.01 lot), Recommended - \$860 for each start lot of 0.01

Profile: Elevated

Safe: Minimum - \$1300 (0.01 lot), Recommended - \$4335 for each start lot of 0.01

Normal: Minimum - \$550 (0.01 lot), Recommended - \$1835 for each start lot of 0.01

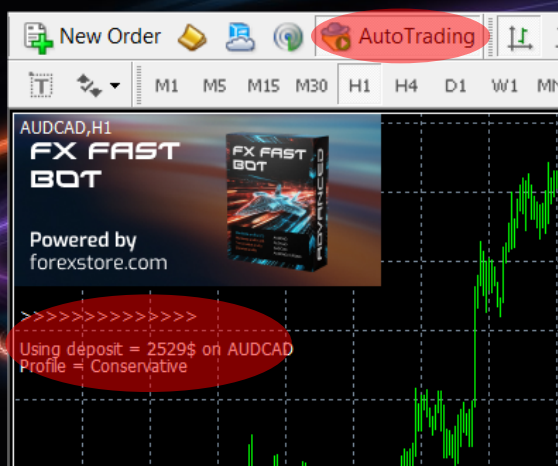
Aggressive: Minimum - \$300 (0.01 lot), Recommended - \$1000 for each start lot of 0.01

Our recommendation is to use Safe MM. Normal mode could be used at your own risk, but Aggressive is not recommended. This money management option is simply for those who want to take a risk and potentially earn more.

In order to get the best performance, we recommend using accounts with a minimum spread, such as ECN accounts. The maximum spread for AUDCAD on standard accounts should be 40 points (4 pips on 4-digit quotes) or lower. For ECN accounts, it should be 15 points or less (it is normal if the spread occasionally jumps higher - the EA should be able to handle it).

Attention! This robot can operate with US brokers, but only on Netting accounts.

Make sure that AutoTrading/Algo Trading is enabled and the symbol ">" is running:



NOW YOU ARE READY TO START!

HERE YOU CAN READ MORE ABOUT ALL THE PARAMETERS OF FX FASTBOT:

Profile – different styles of trading.

Conservative profile – seeks a quicker exit from the market, therefore settling for a smaller profit. As a result, it is the most conservative approach.

Moderate profile (V1) (V2) – these are variations of medium-risk settings. Modification V1 closes one order in profit and the other in loss, but with an overall profit. Modification V2 typically closes both orders in profit, or with a partial loss.

Elevated profile – works simultaneously with two pairs: AUDCAD and EURUSD. These pairs are correlated, so the system can close orders on both pairs at the same time in such a way as to achieve profit.

Occasionally, they may operate separately (simultaneously) – the system itself determines which mode to use at any given moment.

MM – money management of the EA. Using Normal and Aggressive money management, the profits are much higher compared to Safe, but the risks also increase. Normal mode is set up in such a way that there were no stop losses during backtesting or real trading. Aggressive sometimes had stop losses, but the higher profits help offset this.

AutoRisk – if “true” the EA will set lot size automatically, based on your deposit and the risk you set. If “false” the EA will use lot size, which you can set manually in StartLot.

RiskLimit – a part of your deposit (in percentage) which the EA will use for trading. Doesn’t work if AutoRisk is “false”. The minimum deposits which are required for the EA are equal to 100% risk. To be able to trade with a lower risk your deposit should be bigger than the minimum required deposits.

StartLot – lot size, which you can set manually. Doesn't work if "AutoRisk" is "true".

Drawdown Control – if "true" the EA works as usual and limits a drawdown. If "false" the EA removes all StopLosses and stops limiting a drawdown. It helps to wait for a rollback to clients who are willing to take that risk.

Slippage – slippage, which you can set manually.

Hedging – if "No", the EA will disable opening of possible opposite trades (no hedge). If "Yes", the EA will trade without hedging limitations. **Hide Stops** will hide SL and TP for all orders, if that is needed, and the EA will close trades in the necessary moments at their Market prices, same as on our accounts.

Attention! This robot can operate with US brokers, but only on Netting accounts.

MT5 version of the EA has an additional parameter - **Order_Filling_Type**:

ORDER_FILLING_FOK – an order can be filled only in the specified amount. That is a recommended default mode for a guaranteed proper work of the original strategy.

ORDER_FILLING_IOC – a trader agrees to execute a deal with the volume maximally available in the market. In case of using this mode, there could be a violation in the strategy of the EA, and we cannot guarantee a proper operation of the system in all kind of situations. Use this mode only if the default FOK mode is forbidden and you are ready to put up with possible deviations in the strategy.

ORDER_FILLING_RETURN – in case of partial filling an order with remaining volume is not canceled but processed further. In case of using this mode, there could be a violation in the strategy of the EA, and we cannot guarantee a proper operation of the system in all kind of situations. Use this mode only if the default FOK mode is forbidden and you are ready to put up with possible deviations in the strategy.

If you have any questions, please contact us: support@fxfastbot.com

