



[support@maxscalper.com](mailto:support@maxscalper.com)

## **Disclaimer and Risk Warnings**

Trading any financial market involves risk. The content of this e-book, its various associated websites and all related correspondence are neither a solicitation nor an offer to purchase or sell any financial instrument.

Although every attempt has been made to assure accuracy, we do not give any express or implied warranty as to its accuracy. We do not accept any liability for error or omission. Examples are provided for illustrative and educational purposes only and should not be construed as investment advice or strategy.

No representation is being made that any account or trader will or is likely to achieve profits or losses similar to those discussed in this e-book. Past performance is not indicative of future results.

By purchasing the software, subscribing to our mailing list or using the website you will be deemed to have accepted these terms in full.

The MAX Scalper Team, their representatives and associates do not and cannot give investment advice.

We endeavor to ensure that related websites are available 24 hours per day but we cannot be held liable if, for any reason, a site is unavailable.

The information provided in this e-book is not intended for distribution to, or for use by, any person or entity in any jurisdiction or country where such distribution or use would be contrary to law or regulation or which would subject us to any registration requirement within such jurisdiction or country.

There are numerous factors related to the market in general and to the implementation of any specific trading program, which cannot be fully accounted for in the future of performance results, all of which can adversely affect actual trading results.

We reserve the right to change these terms and conditions without notice. You can check for updates to this disclaimer at any time without notification.

The content of this e-book and all related websites and correspondence are copyright and may not be copied or reproduced.

### ***U.S. Government Required Disclaimer***

Commodity Futures Trading Commission Futures and Options trading has large potential rewards, but also large potential risk. You must be aware of the risks and be willing to accept them in order to invest in the FOREX, futures and options markets. The past performance of any trading system or methodology is not necessarily indicative of future results.

# Please read the following information before installing MAX Scalper

## Your Windows Recommendations If You Are Not Using A VPS

- Make sure your system is clean and running smoothly.
- Do not run unnecessary software that may require more system resources.
- Do not play music, movie, or games while running the software for best performance.
- Some anti-virus or firewalls can block or slow down Meta trader operation, please make sure they are not interfering.
- Make sure you have a good internet connection.
- If running Windows 7, 8, 10 or Vista run Meta trader with Administrator privileges or with UAC disabled. Right click Meta trader then click Run As Administrator.

Feel free to use a VPS or virtual private server for most reliable operation of this software. Recommendations are in member's area and below.

## RECOMMENDATIONS

You will need a few items before installing MAX Scalper

- Pick a Forex broker... I have a few recommendations in members' area and below.
- Install Meta Trader 4 (provided by your broker free).
- Use a VPS (virtual computer). A recommendation, not urgent to utilize.

**Forex Broker for US Traders:** [Click Here To Sign Up](#)

**Forex Broker for International Traders:** [Click Here To Sign Up](#)

**Recommended reliable VPS service:** [Click Here for VPS](#)

**Install Services (Have someone install MAX Scalper):** [Click Here](#)

## Activating Your Copy Of MAX Scalper

### You will need to activate your copy of MAX Scalper

You can click the activation link in members' area. Or you can click the following link: [Activate your license](#)

Enter your e-mail address used during purchase, your receipt and your Meta Trader 4 Account Login Number provided by your broker.

Then click **Activate Your License**.

If everything is correct there will be a confirmation note and there **will be an ID number for you there**.

**Please note this ID number as you will need to enter it in the ID setting of MAX Scalper during setup.**

You can change your account anytime using this tool, its 1 account per license at a time.

## RISK MANAGEMENT

**Leverage Recommendations:** Any leverage is fine. But of course if you use lower leverage, then aim for lower risk / lot sizes.

There are two options for risk that you can use, Fixed Lots or Money Management. The other options you will find are not recommended and should be ignored.

**Fixed Lots:** This option allows you to select the exact lot size you would like to use. This is not recommended, unless you have a specific lot size you prefer.

**Money Management:** This option is recommended and allows you to set a percentage of risk you want per trade and it will automatically set the lot size for you based on this risk percentage.

Once you have installed MAX Scalper you can adjust the settings under Inputs (explained shortly in this manual in more detail).

**For Using Fixed Lots:** In Settings, scroll to Calculate Lots Mode, and change it to **Fixed Lots**. Then select a lot size you want and put it into Custom Lot Size.

**For Using Money Management:** In Settings, scroll to Calculate Lots Mode, and change it to **Percent of Balance** (Set by Default for you), then set Max Risk to the percentage risk you want (default is 2). I recommend 1 to 4 range.

To edit settings, keep reading this manual, explained further down.

## **PAIR SUFFIX**

If your broker uses a Suffix at the end of a pair, you will need to set this in the settings.

For example, some brokers have a pair named like this: EURUSDecn, EURUSDx, EURUSD.xp, or any other combination.

If this is the case, you need to put the ending suffix into PairSuffix settings, that would be ecn or x or .xp, for the examples above.

Please keep reading for instructions on how to access settings to set this.

## INSTALLATION

1. Click the MAX Scalper install icon. You may need to right click it and click Run As Administrator.
2. Click the Next > button.
3. Please read the terms and conditions, click I accept, then click Next >
4. **Click Browse, then select the folder that your Meta Trader 4 copy is installed in. Most copies are found in Program Files under C:\ drive. But on some occasions it may be installed to your C:\ drive only, then click Next >.**
5. Click Next >.
6. If you do not have VC++ 2010 SP1 Redistributable installed, then please leave it checked, it will automatically install it, and click Next.
7. Next click Install.
8. Click Next >.
9. Click Finish and Meta Trader will open.

Once Meta Trader 4 opens, look on the left for Market Watch. It will show a listing of Pairs. Right click in the box and click SHOW ALL.



Symbol	Bid	Ask
USDJPYecn	122.851	122.859
GBPUSDecn	1.52921	1.52945
USDCHFecn	1.01266	1.01316
EURUSDecn	1.07365	1.07380
AUDCADecn	0.95585	0.95631
AUDCHFecn	0.72832	0.72883
AUDJPYecn	88.356	88.385
AUDNZDecn	1.09555	1.09571
AUDUSDecn	0.71927	0.71942
CADCHFecn	0.76178	0.76232
CADJPYecn	92.422	92.445
CHFJPYecn	121.267	121.329
CHFNOKecn	8.64051	8.64051
EURAUDecn	1.49242	1.49286
EURCADecn	1.42693	1.42741
EURCHFecn	1.08740	1.08791
EURGBPecn	0.70204	0.70213
EURHUFecn	309.857	310.549
EURJPYecn	131.907	131.940

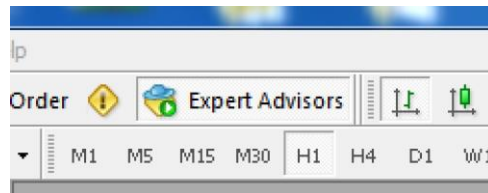
Now right click EUR/USD, and click Chart Window. You should see a chart that looks like this, no need to adjust timeframe, but H1 is fine.

**DO NOT PUT IT ON ANY OTHER PAIRS, IF YOU DO YOU WILL GET DUPLICATE TRADES...**

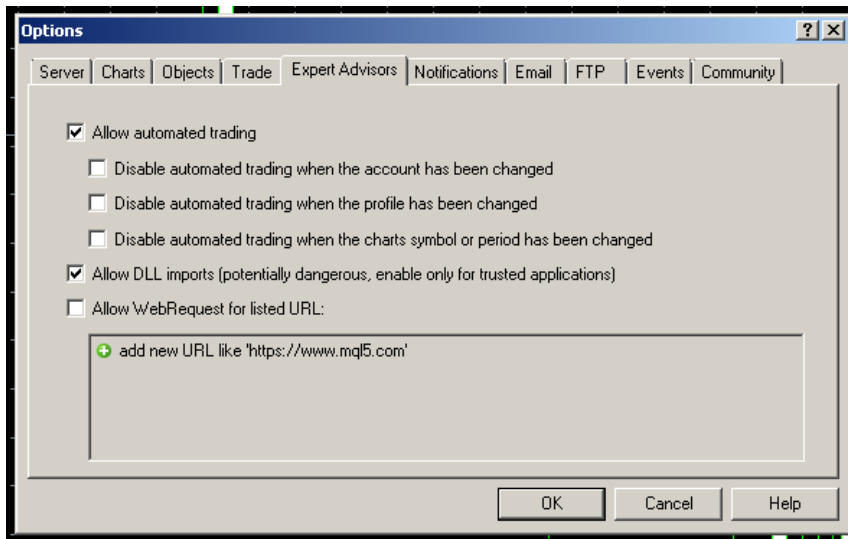




Make sure the Expert Advisors button on the top of the screen is pressed in and green. If not, then click it. (It may also say Automated Trading).



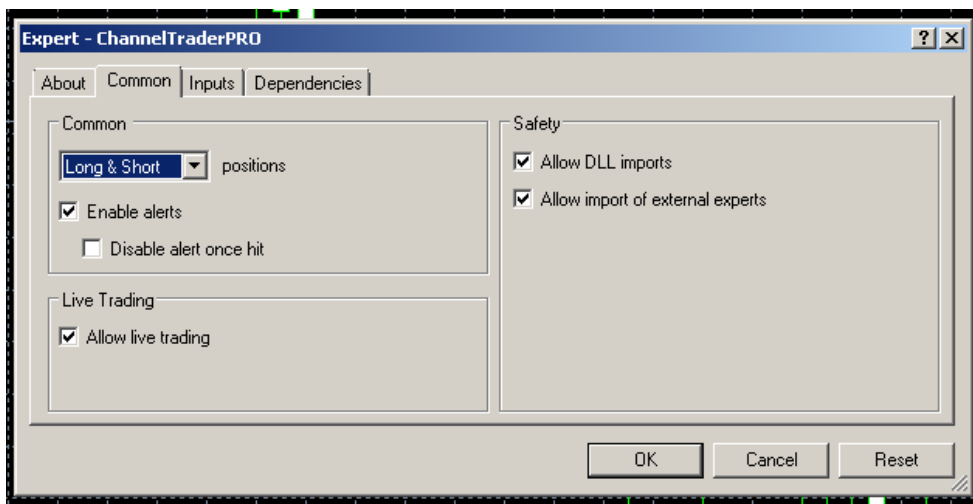
Click TOOLS at top, then click OPTIONS, then click EXPERT ADVISORS. And make sure the check markets match below.



On the left side below Market Watch, look for Navigator window. Click the (+) sign next to the Expert Advisors text.

Drag MAX Scalper to the EURUSD chart you opened.

After dragging the software to the chart the following box will appear showing the Common tab, make sure all the checks match the box shown below, if not, please check them so they do match, next click Inputs:



Once you have clicked Input, there will be many settings you can adjust.

**For almost all of the settings, default is HIGHLY recommended, please only change ID for activation, the risk, and PairSuffix if necessary.**

**An explanation for some of the settings are below. If not mentioned it is recommended to not change the setting unless experienced.**

**ID** – When you activate your license in members area you will be provided an ID number, please enter that number in this field.

**Use MasterComments** – If true trade comment will be derived from the system. If false, TradeComment field will be used.

**TradeComment** – Allows you to set a custom comment for each trade if UseMasterComments is false.

**CalculateLotsMode** - This lets you set the risk controls, I recommend using Fixed Lots or Percent of Balance. Fixed Lots lets you set the exact lot size you want. Or you can use Percent of Balance and it uses a % of your account. Please refer to risk management section on previous page.

**CustomLotSize / Max Risk** – After you choose Calculate Lots Mode you will need to select the risk or lots. If you choose Fixed Lots, then set your lot amount in Custom Lot Size. If you chose Percent of Balance, then put your risk % in Max Risk.

**EnableMarketStatus** - By default this is TRUE, if TRUE it will turn off the system when market is closed based on broker time. For some brokers the timings may be off as in market can open and the system won't start for an hour, in this case you can set this FALSE, and it will leave it running always.

**PairSuffix** – If your EURUSD pair has a suffix, like this... EURUSD.xp or EURUSDx you will need to put that suffix in PairSuffix setting. For example: .xp or x

**ONCE COMPLETE CLICK OKAY  
THEN INFORMATION WILL POP UP  
ON THE CHART.**